

# Professional CASINO CHIPS



**SUN-FLY**<sup>®</sup>  
PROFESSIONAL CASINO CHIPS

## SUN-FLY CASINO CHIPS

29F/2 Poly Midtown Plaza, #23  
Xuanyue Eastern Rd., Haizhu  
District, Guangzhou, China

Tel: +86 20 8738 6048  
[www.sunflycasinochips.com](http://www.sunflycasinochips.com)  
[info@sunflycasinochips.com](mailto:info@sunflycasinochips.com)



# ABOUT US

Sun-Fly Professional Casino Chips specialises in manufacturing and supplying fully customisable casino grade ceramic chips for professional markets, and is widely recognised by gaming tournaments and professionals worldwide.

Sun-Fly founded in 2004, with our hard work, dedication and by keeping quality and security as priority, we have enjoyed rapid growth in the industry and are now the largest and most reputable ceramic chip manufacturer in the world, manufacturing more than 6,000,000 chips in one year alone.

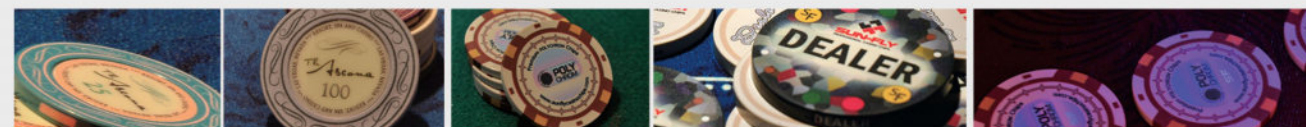
Sun-Fly's customer orientated approach, consistently high quality of product, security, cost efficiency, continuous development and innovation in the market place has gone a long way to build trust and a good reputation with our client base, which we believe is the basis of our success.

We have already formed partnerships with some great companies in Australia, Europe, USA and South Africa, and we cordially invite any well-established Casino related dealers to contact us and share your business ideas, and to build up possible business partnerships.



# TABLE OF CONTENTS

* About Us		
About Us	.....	01
* Casino Chips		
PolyChrom Chips	.....	03-16
PolyInno Chips	.....	17-32
PolyClay Chips	.....	33-38
PolySpectra	.....	39-41
* Table Layout		
Table Layout	.....	42-44
* Chip Features		
I/R Pen	.....	45
UV Light	.....	46
Security	.....	47-50
* Accessories		
Cases	.....	51-53
* Color Chart		
Color Chart	.....	54



# POLYCHROM CHIPS



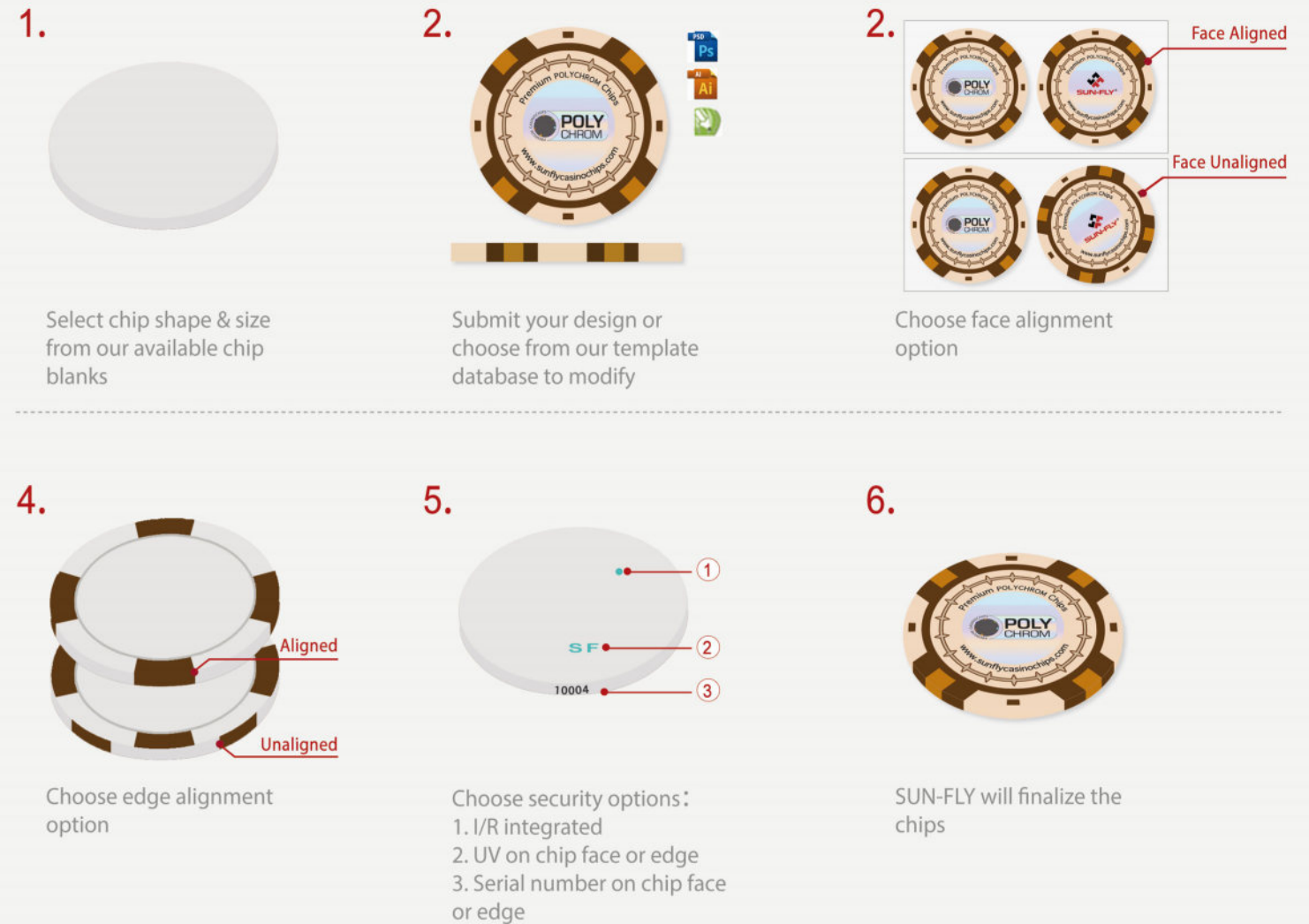
POLYCHROM chips are regular chips with no inserts or decals, they are fully customizable in full color graphics on both faces and the edge using state of the art sublimation printing techniques. Various sizes are available, as well as a choice of either a texture or smooth surface finish on the faces and have Sun-Fly's unique high gloss rolling edge. All chip products are made with casino grade materials and are lead free.

**Note:**

Custom shapes, sizes or curved patterns of a chip is acceptable, please speak with us for more detail information.

## CUSTOMIZATION

POLYCHROM Chips are fully customisable on both faces and the edges, the following images show how Sun-Fly helps customers produce a custom POLYCHROM Chip.



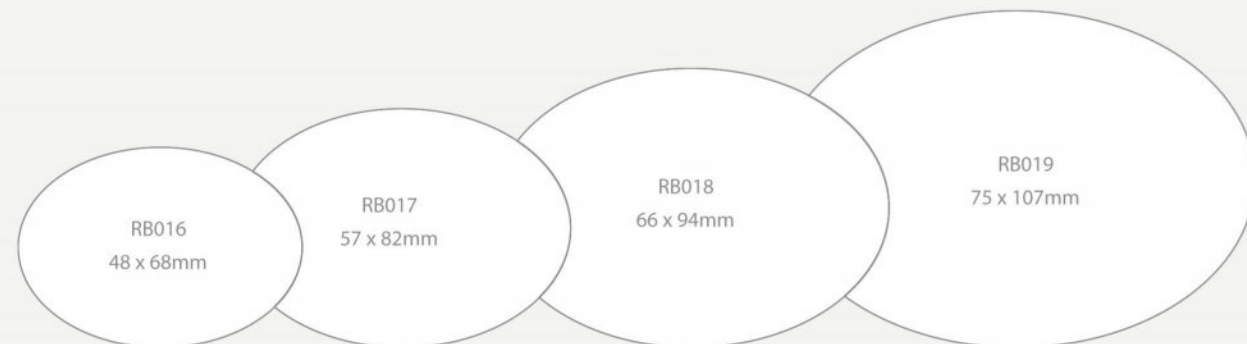
## SHAPES / SIZES / SURFACE

<p>RB001 / RB002 39mm</p>	<p>RB003 / RB004 43mm</p>	<p>RB009 44mm</p>	<p>RB005 47mm</p>	<p>RB006 44mm</p>
Code#: RB001/RB002	Code#: RB003/RB004	Code#: RB009	Code#: RB005	Code#: RB006
Surface: Textured/Smooth	Surface: Textured/Smooth	Surface: Smooth	Surface: Smooth	Surface: Smooth
Diameter: 39mm	Diameter: 43mm	Diameter: 44mm	Diameter: 47mm	Diameter: 44mm
Thickness: 3.3mm	Thickness: 3.3mm	Thickness: 3.3mm	Thickness: 3.3mm	Thickness: 3.3mm
Weight: 9.5g	Weight: 11.3g/11.5g	Weight: 13g	Weight: 13.2g	Weight: 12.5g

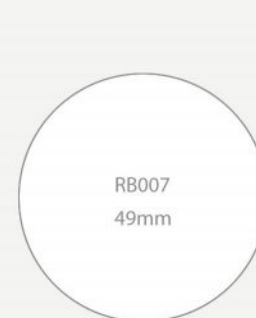


Code#: <b>RB011</b> ,	Rectangular Plaque,	Diameter: <b>48 x 68mm</b> ,	Thickness: <b>5mm</b> ,	Weight: <b>38g</b>
Code#: <b>RB012</b> ,	Rectangular Plaque,	Diameter: <b>57 x 82mm</b> ,	Thickness: <b>5mm</b> ,	Weight: <b>52.5g</b>
Code#: <b>RB013</b> ,	Rectangular Plaque,	Diameter: <b>66 x 94mm</b> ,	Thickness: <b>5mm</b> ,	Weight: <b>65g</b>
Code#: <b>RB014</b> ,	Rectangular Plaque,	Diameter: <b>75 x 107mm</b> ,	Thickness: <b>5mm</b> ,	Weight: <b>92g</b>
Code#: <b>RB015</b> ,	Credit Card Size Plaque,	Diameter: <b>85 x 53mm</b> ,	Thickness: <b>3.5mm</b> ,	Weight: <b>33.5g</b>

All PolyChrom plaques are finished with smooth surface



Code#: <b>RB016</b> ,	Oval,	Diameter: <b>48 x 68mm</b> ,	Thickness: <b>5mm</b> ,	Weight: <b>28.5g</b>
Code#: <b>RB017</b> ,	Oval,	Diameter: <b>57 x 82mm</b> ,	Thickness: <b>5mm</b> ,	Weight: <b>46g</b>
Code#: <b>RB018</b> ,	Oval,	Diameter: <b>66 x 94mm</b> ,	Thickness: <b>5mm</b> ,	Weight: <b>55g</b>
Code#: <b>RB019</b> ,	Oval,	Diameter: <b>75 x 107mm</b> ,	Thickness: <b>5mm</b> ,	Weight: <b>81g</b>



Code#: **RB007**  
Diameter: **49mm**  
Thickness: **5.5mm**  
Weight: **24g**



Code#: **RB008**  
Diameter: **60mm**  
Thickness: **5.5mm**  
Weight: **38.5g**

All PolyChrom DB' s are finished with smooth surface

## EDGE ALIGNMENT

Alignment is when a pattern, color stripes, stripes or edge spots on the face of the chips extend down to line up with the rolling edge.



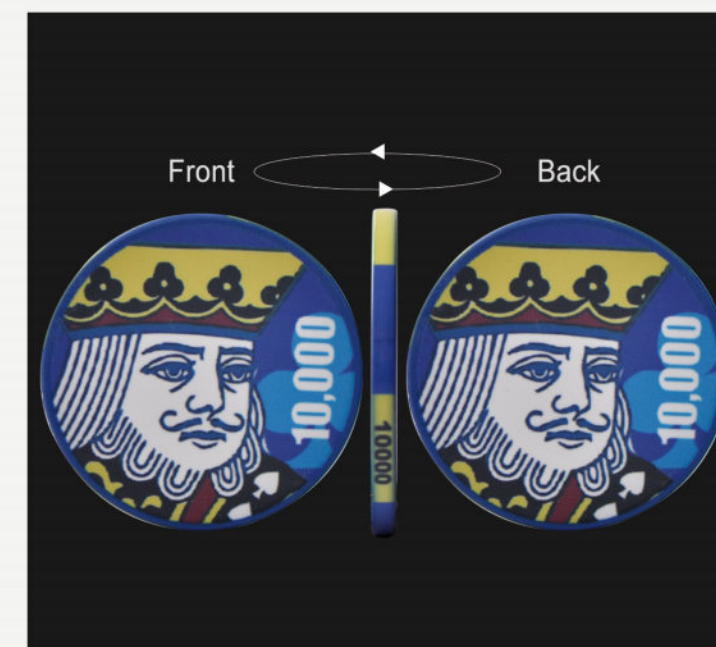
An example of edge alignment



An example of unalignment

## FACE ALIGNMENT

Images on both sides of the chip towards to same direction is face alignment.



An example of face alignment



An example of unalignment

## SECURITY OPTIONS

The complexity of making a high quality ceramic chip makes counterfeiting Sun-Fly products extremely difficult, and with the combination of different security features embedded into UV ink, this has made it almost impossible to successfully counterfeit. For professional casinos, this is the most efficient and economic method to identify their own chip.

### UV Security

Both faces & the rolling edge of the chips are able to accept UV inks which are invisible to the naked eye. The code or image that is used as the UV print is customizable, so can be unique for each client, which again dramatically reduces the chances of counterfeiting. Additionally, the MOQ of custom making UV security chips is as low as 300 pcs.

Multiple UV marking position on one chip is acceptable without needing any extra charge.



multiple UV on chip face

multiple UV on chip edge

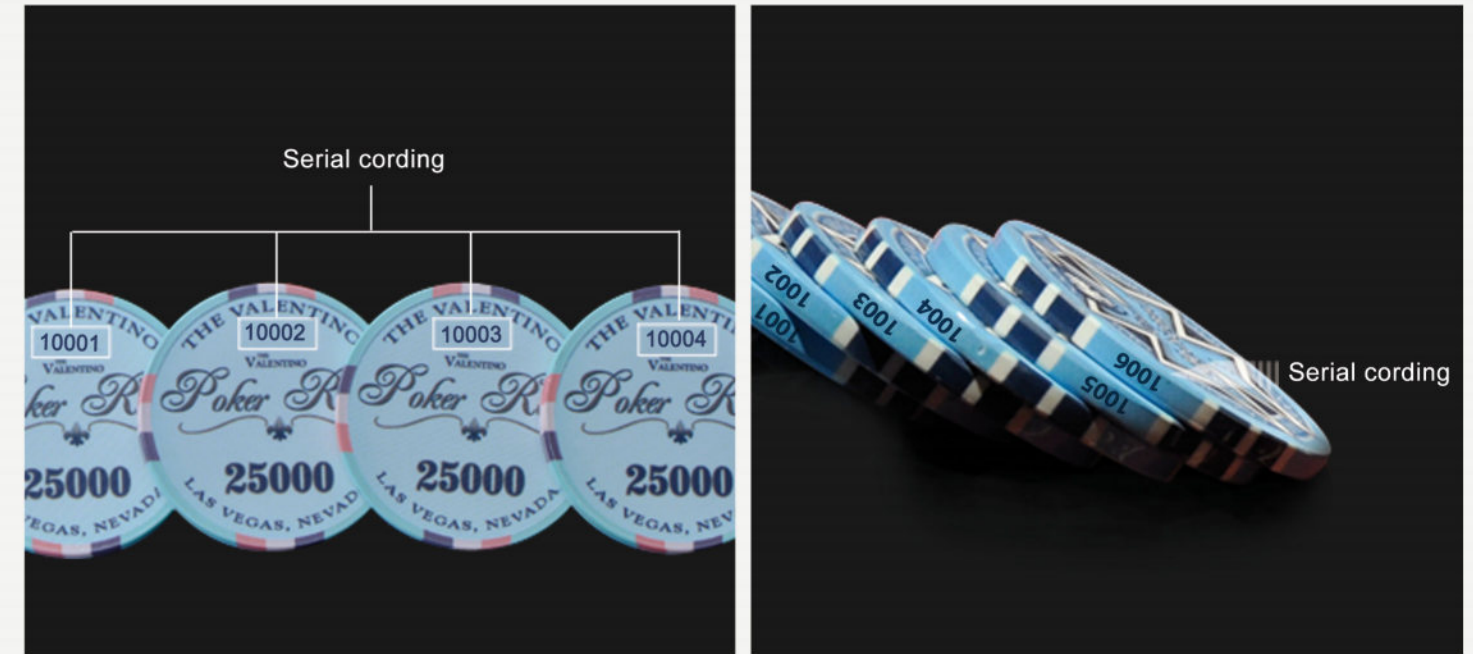
### I/R Integration

I/R refers to infra-red, it is a kind of anti-counterfeiting technology that applies I/R sensitive material into the chip material.



### Serial Number

Serial number features a deeper level of anti-counterfeiting protection, is based on the UV and I/R security, to enhance security of all chip products.



## PACKING SPECIFICATION

Model#	PCS/Small Case	PCS/Large Case	Small Case Size	Large Case Size	Small Case Weight	Large Case Weight
RB001	500	1000	22.2*18*10.3	38.5*25*13	5.0	9.8-11.0
RB002	500	1000	22.2*18*10.3	38.5*25*13	5.0	9.8-11.0
RB003	400	800	19.8*19.8*10.3	42*21.6*13	5.1	10.5-11.5
RB004	400	800	19.8*19.8*10.3	42*21.6*13	5.1	10.5-11.5
RB005	400	800	19.8*19.8*10.3	42*21.6*13	5.3	11.0-12.0
RB006	400	800	19.8*19.8*10.3	42*21.6*13	5.1	10.5-11.5
RB007	180	360	22.2*18*10.3	38.5*25*13	5.0	10.0-11.0
RB008	135	270	22.2*18*10.3	38.5*25*13	5.4	11.0-12.0
RB009	400	800	22.2*18*10.3	38.5*25*13	5.5	11.0-12.0
RB011	150	300	22.2*18*10.3	38.5*25*13	5.7	12.0-13.0
RB012	120	240	22.2*18*10.3	38.5*25*13	6.7	13.0-14.0
RB013	60	120	22.2*18*10.3	38.5*25*13	4.1	8.5-9.0
RB014	60	120	22.2*18*10.3	38.5*25*13	5.4	11.0-12.0
RB015	200	400	22.2*18*10.3	38.5*25*13	7	13.5-14.5
RB016	120	240	22.2*18*10.3	38.5*25*13	4	8.0-9.0
RB017	120	240	22.2*18*10.3	38.5*25*13	6.4	12.0-13.0
RB018	60	120	22.2*18*10.3	38.5*25*13	4	8.7-9.7
RB019	60	120	22.2*18*10.3	38.5*25*13	5	10.5-11.5

SAMPLE DESIGNS REFERENCE

Vignoble



The Medieval



Bold Class



Sunset



PACKING DETAILS

Valentino Poker Room



Mosaics



Spaydz



PACKING DETAILS

Quality Club



Lucky Dragon



Bauta



Suits



Badlands Poker





SAMPLE DESIGNS REFERENCE

Dropa Discs



Playa



The Enigma



# POLYINNO CHIPS



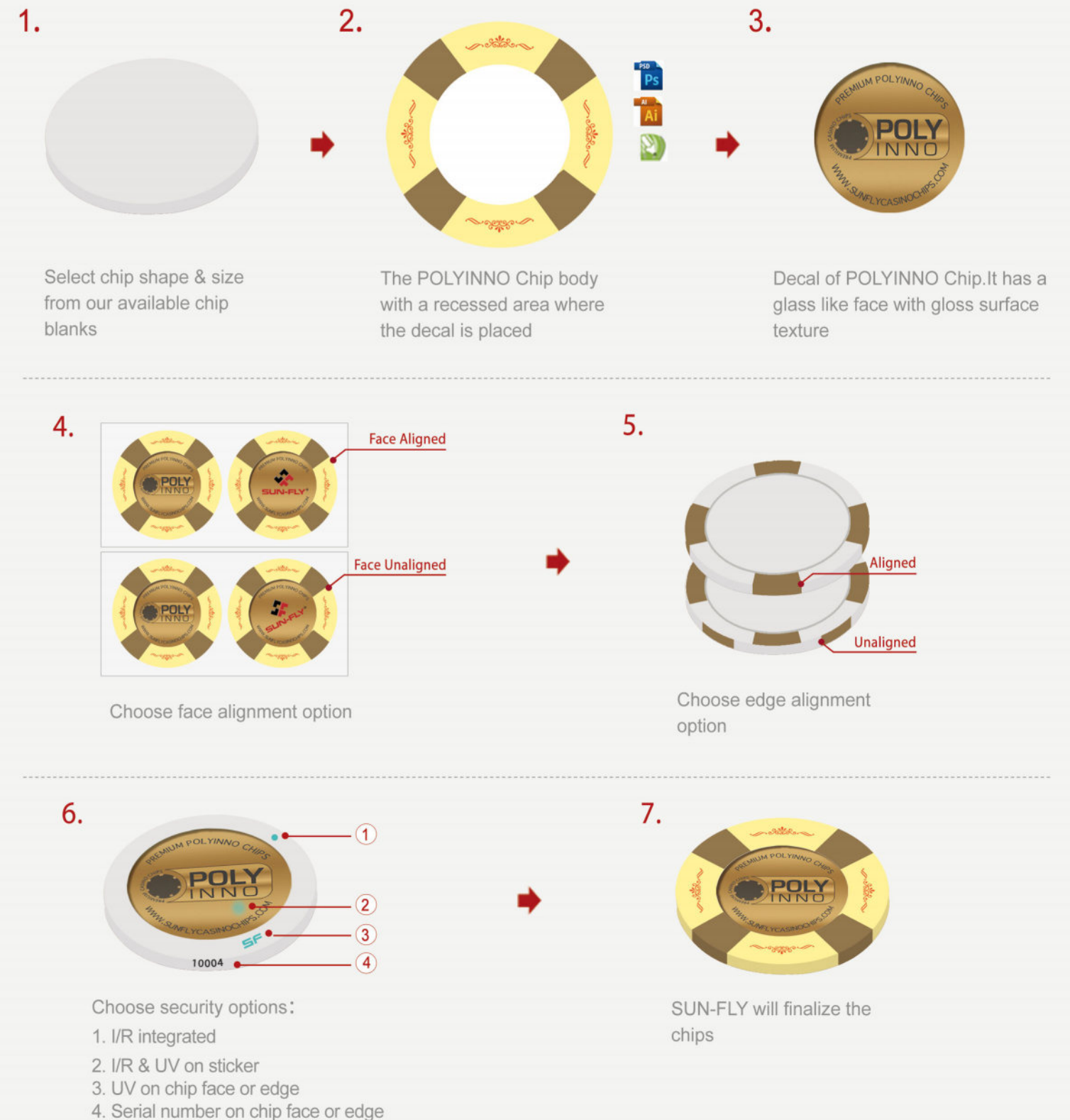
POLYINNO chips are a unique hybrid of regular ceramic chips (POLYCHROM) and sticker chips; they are fully customisable in full colour graphics on both faces and the edges using state of the art sublimation printing techniques, and have a glass like decal applied to a recessed area on both sides. Various sizes are available with a smooth surface finish on the faces and Sun-Fly's unique high gloss rolling edge.

**Note:**

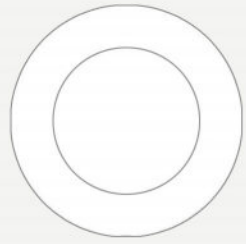
Custom shapes, sizes or curved patterns of a chip is acceptable, please speak with us for more detail information.

## CUSTOMIZATION

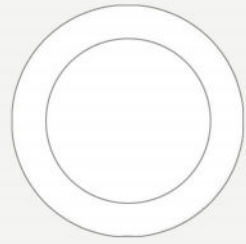
The PolyInno chips are fully customizable on both faces and the edges, the following instruction shows how Sun-Fly helps customers produce a custom PolyInno Chip.



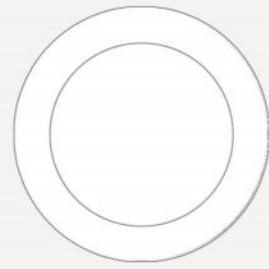
## POLYINNO CHIP TYPES



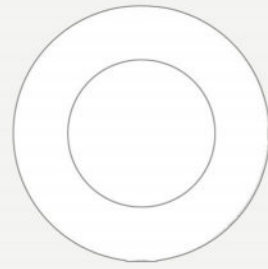
Code#: **HB001**  
 Chip Diameter: **39mm**  
 Sticker Diameter: **25.4mm**  
 Thickness: **3.3mm**



Code#: **HB002**  
 Chip Diameter: **39mm**  
 Sticker Diameter: **28.5mm**  
 Thickness: **3.3mm**

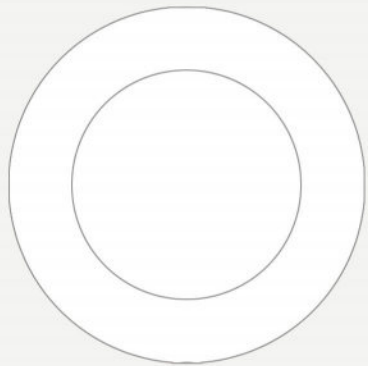


Code#: **HB003**  
 Chip Diameter: **43mm**  
 Sticker Diameter: **31.7mm**  
 Thickness: **3.3mm**



Code#: **HB005**  
 Chip Diameter: **43mm**  
 Sticker Diameter: **25.4mm**  
 Thickness: **3.3mm**

## POLYINNO DEALER BUTTONS

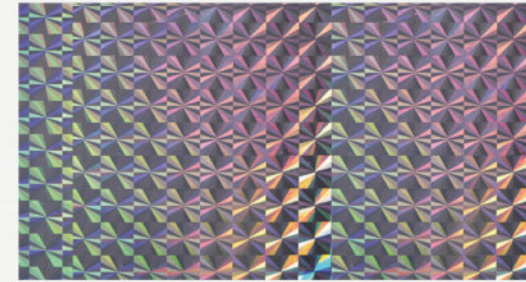


Code#: **HB004**  
 Chip Diameter: **60mm**  
 Sticker Diameter: **39mm**  
 Thickness: **5.6mm**

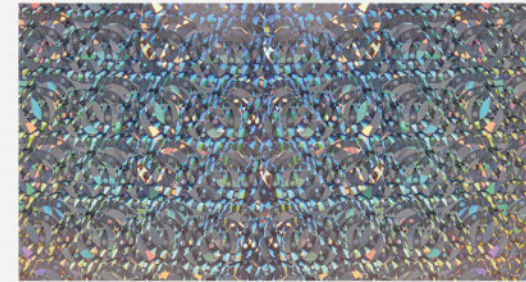
## NORMAL STICKER



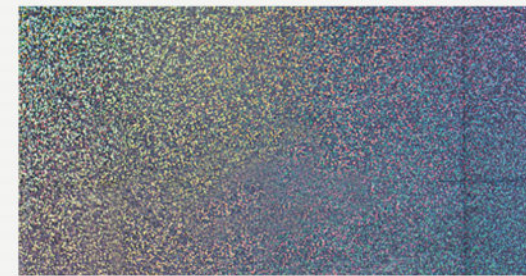
## LAZER STICKERS



**LAZER**  
 LST001



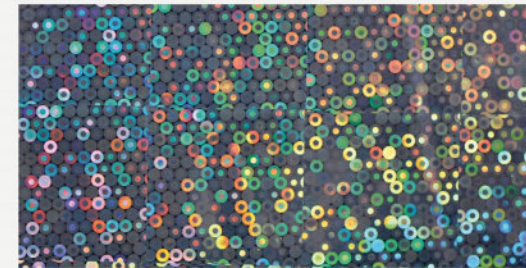
**FRAGMENT**  
 LST002



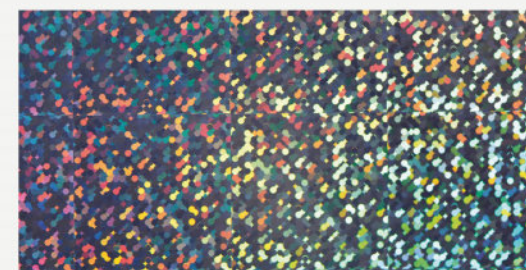
**DOTS**  
 LST003



**STARS**  
 LST004



**CIRCLES**  
 LST005



**CAMO**  
 LST006



## EDGE ALIGNMENT

Alignment is when a pattern, color stripes, stripes or edge spots on the face of the chips extend down to line up with the rolling edge.

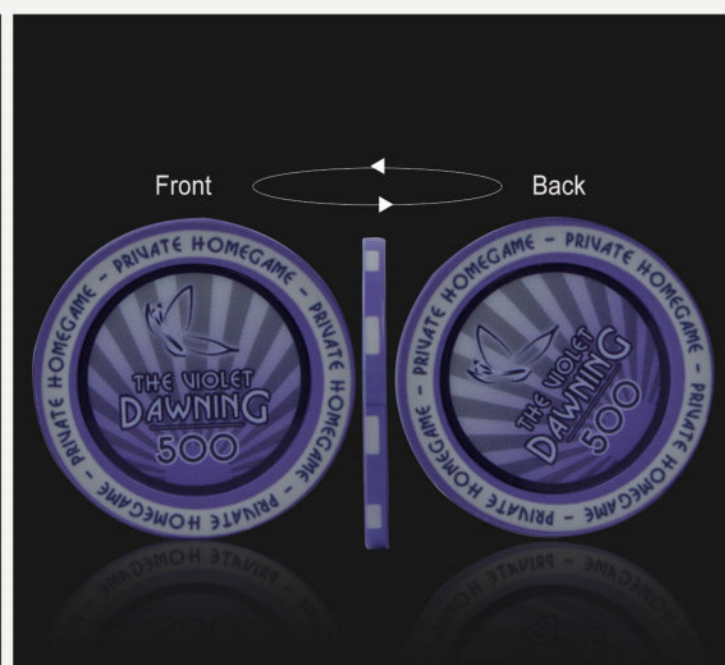
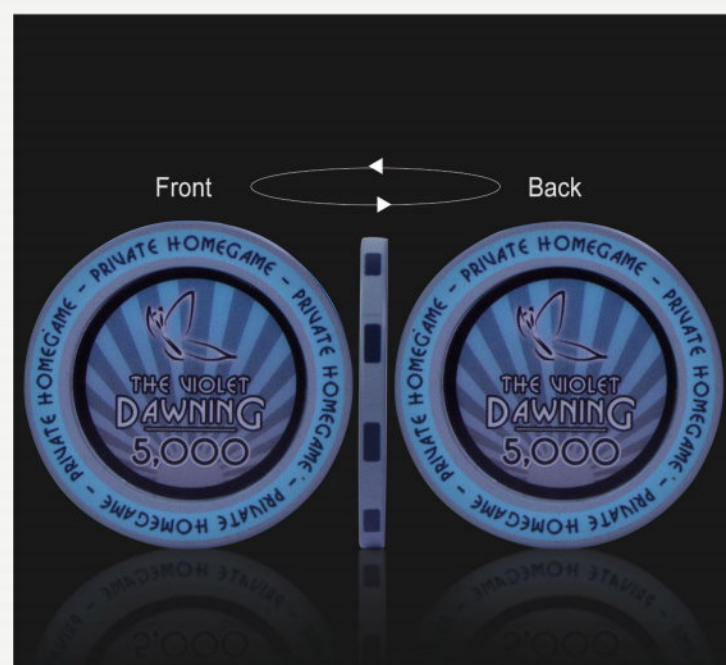


An example of edge alignment

An example of unalignment

## FACE ALIGNMENT

Images on both sides of the chip towards to same direction is face alignment.



An example of face alignment

An example of unalignment

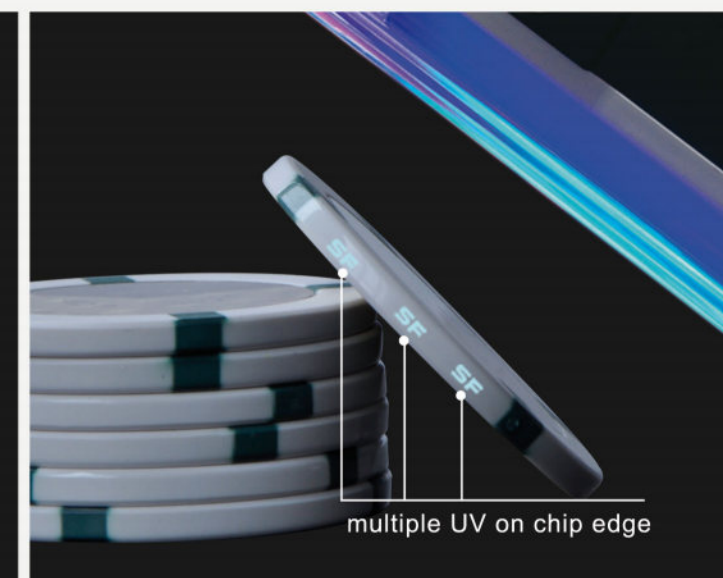
## SECURITY OPTIONS

The complexity of making a high quality ceramic chip makes counterfeiting Sun-Fly products extremely difficult, and with the combination of different security features embedded into UV ink, this has made it almost impossible to successfully counterfeit. For professional casinos, this is the most efficient and economic method to identify their own chip.

### UV Security

Both faces & the rolling edge of the chips are able to accept UV inks which are invisible to the naked eye. The code or image that is used as the UV print is customizable, so can be unique for each client, which again dramatically reduces the chances of counterfeiting. Additionally, the MOQ of custom making UV security chips is as low as 300 pcs.

Multiple UV marking position on one chip is acceptable without needing any extra charge.



multiple UV on chip face

multiple UV on chip edge

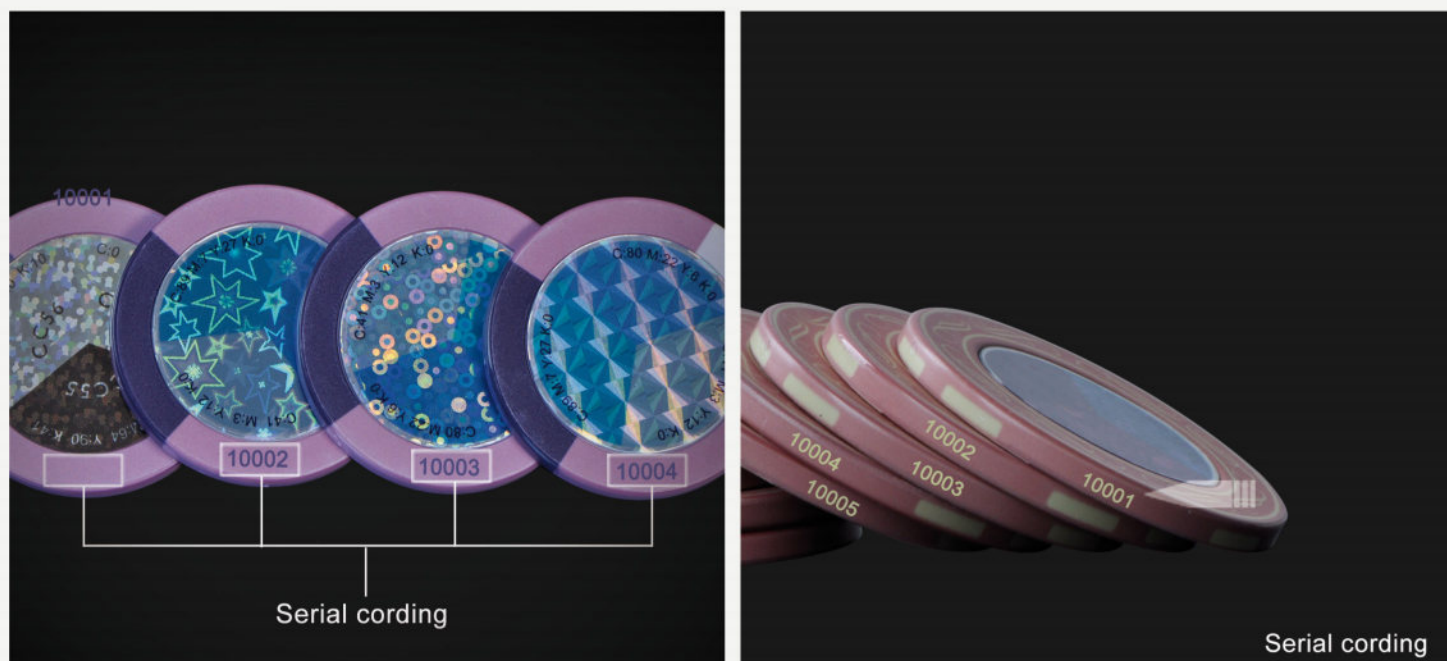
### I/R Integration

I/R refers to infra-red, it is a kind of anti-counterfeiting technology that applies I/R sensitive material into the chip material.



## Serial Number

Serial number features a deeper level of anti-counterfeiting protection, is based on the UV and I/R security, to enhance security of all chip products.



Serial number on face

Serial number on edge

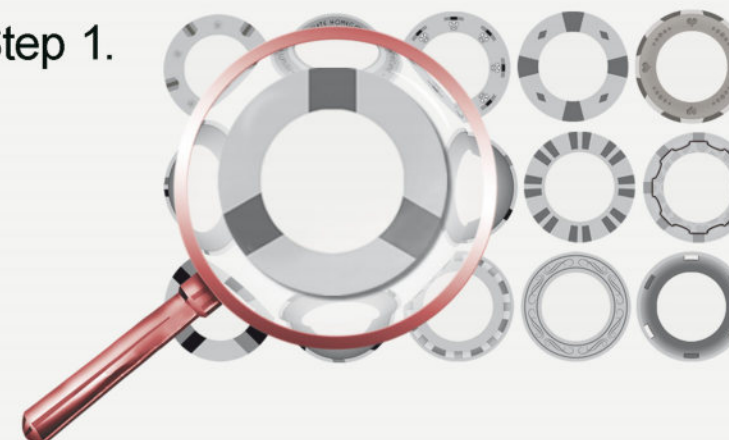
## PACKING SPECIFICATION

Model#	PCS/Small Case	PCS/Large Case	Small Case Size	Large Case Size	Small Case Weight	Large Case Weight
HB001	500	1000	22.2*18*10.3	38.5*25*13	4.5	9.5-10.5
HB002	500	1000	22.2*18*10.3	38.5*25*13	4.4	9.0-10.5
HB003	400	800	19.8*19.8*10.3	42*21.6*13	4.1	8.6-10.0
HB004	400	800	19.8*19.8*10.3	42*21.6*13	4.1	8.6-10.0
HB005	400	800	22.2*18*10.3	38.5*25*13	4.5	9.0-10.0

## DESIGN TEMPLATES

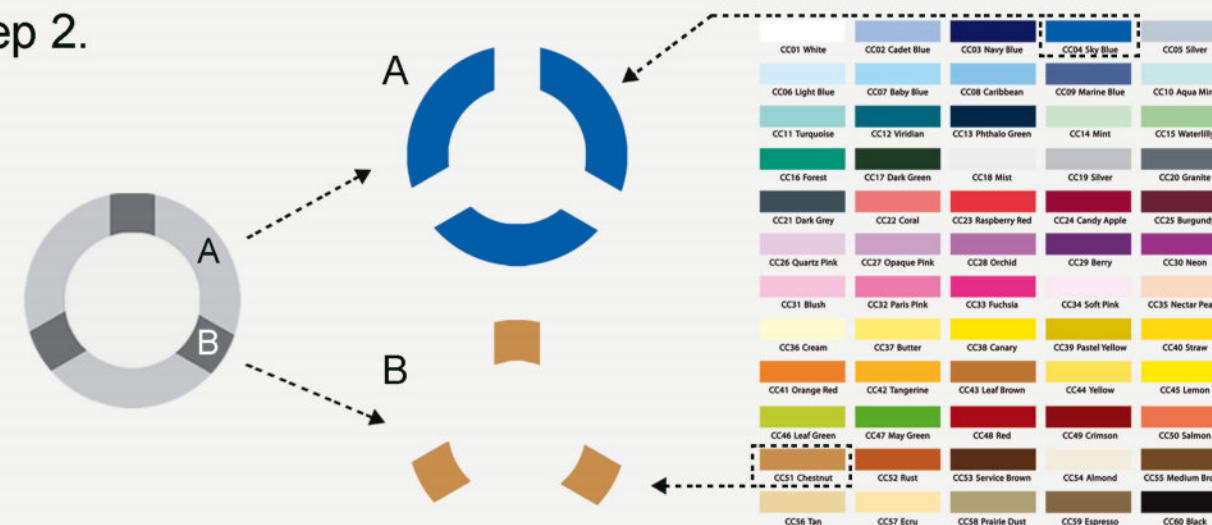
Sun-Fly has several POLYINNO Chip design templates with pre-printed images on the chip body, the decal is then customised to the customer requirements and fitted to the chip blank. Using the POLYINNO templates can effectively reduce the need for prototyping and production time.

### Step 1.



Choose an available template style from our database.

### Step 2.



Each template style is separated in to several parts, choose a standard color from our color chart for each of these parts.

### Step 3.

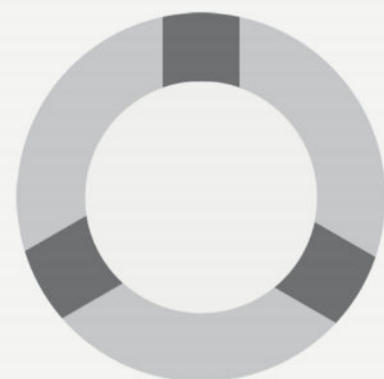




Provide us with your graphic design files for the decal

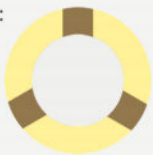





Using the provided design style with color defined and decal design, Sun-Fly will create and finalise the chip product.

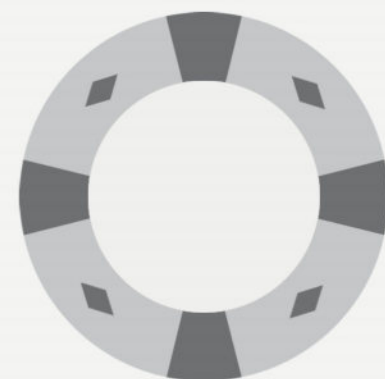
TP001





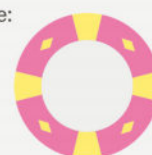



Part A:  Part B: 

Example:    

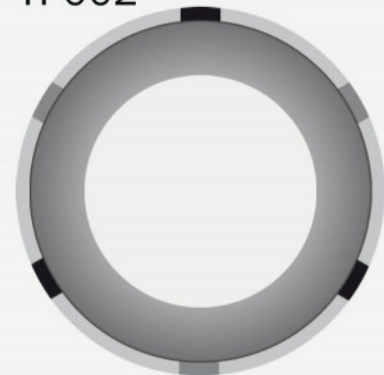
TP004


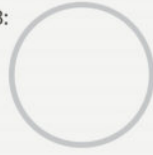






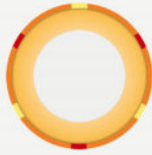
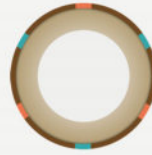
Part A:  Part B: 

Example:    

TP002




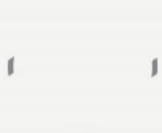



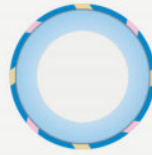


Part A:  Part B:  Part C:  Part D: 

Example:    

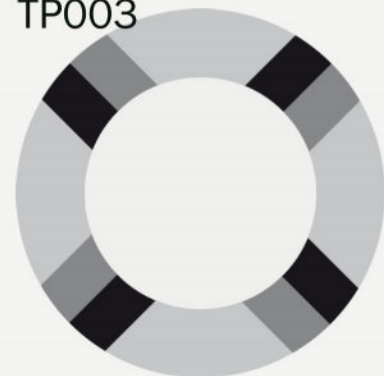
TP005










Part A:  Part B:  Part C:  Part D: 

Example:    

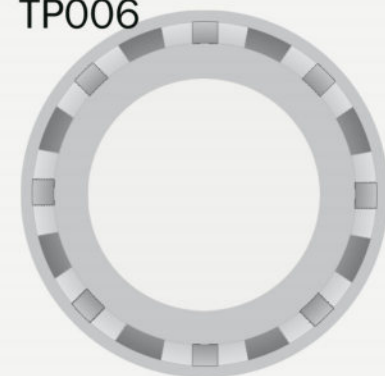
TP003


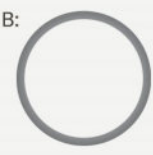




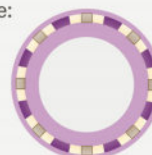



Part A:  Part B:  Part C: 

Example:    

TP006









Part A:  Part B:  Part C:  Part D: 

Example:    

TP007










Part A:  Part B: 

Example:    

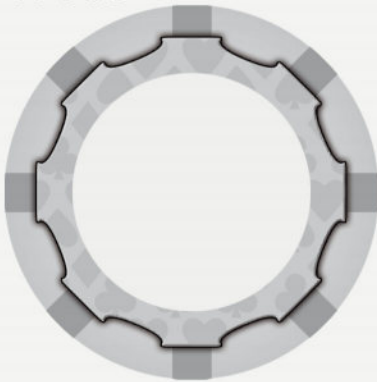
TP010









Part A:  Part B:  Part B: 

Example:    

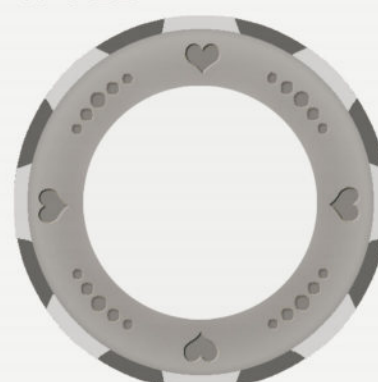
TP008











Part A:  Part B: 

Example:    

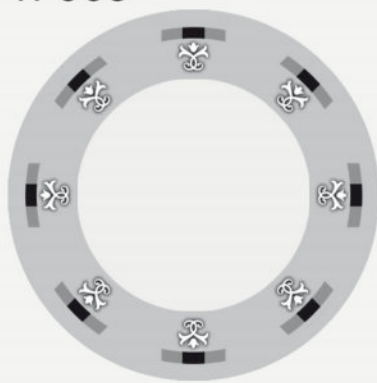
TP011











Part A:  Part B:  Part C:  Part D: 

Example:    

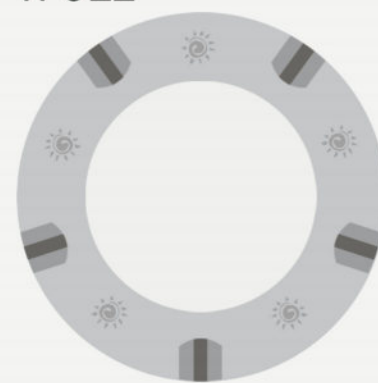
TP009











Part A:  Part B:  Part C:  Part D: 

Example:    

TP012



Part A:  Part B:  Part C:  Part D: 

Example:    

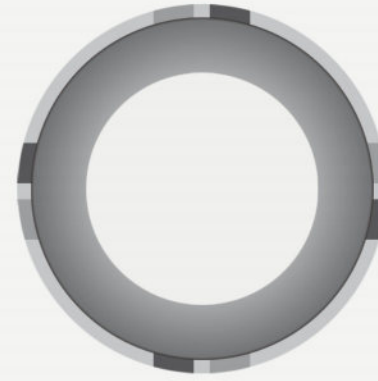
TP013



Part A: Part B: Part C:

Example:

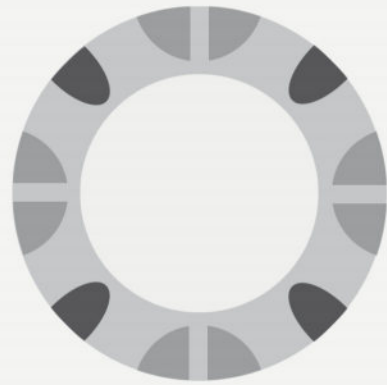
TP016



Part A: Part B: Part C: Part D:

Example:

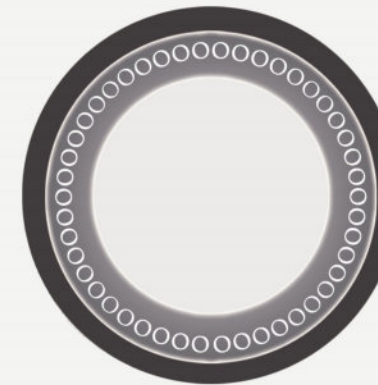
TP014



Part A: Part B: Part C:

Example:

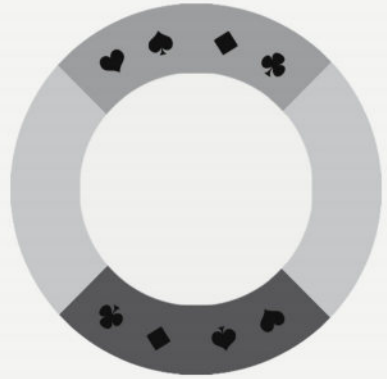
TP017



Part A: Part B: Part C:

Example:

TP015



Part A: Part B: Part C: Part D:

Example:

TP018

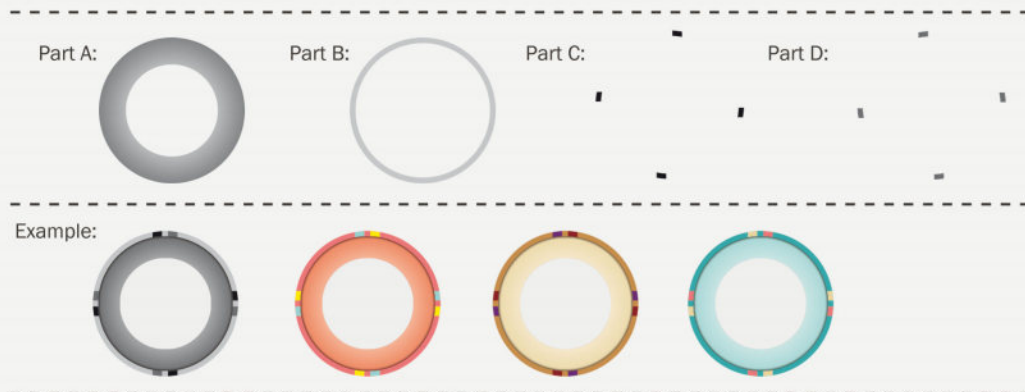
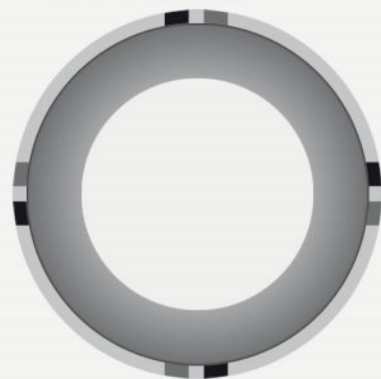


Part A: Part B: Part C: Part D:

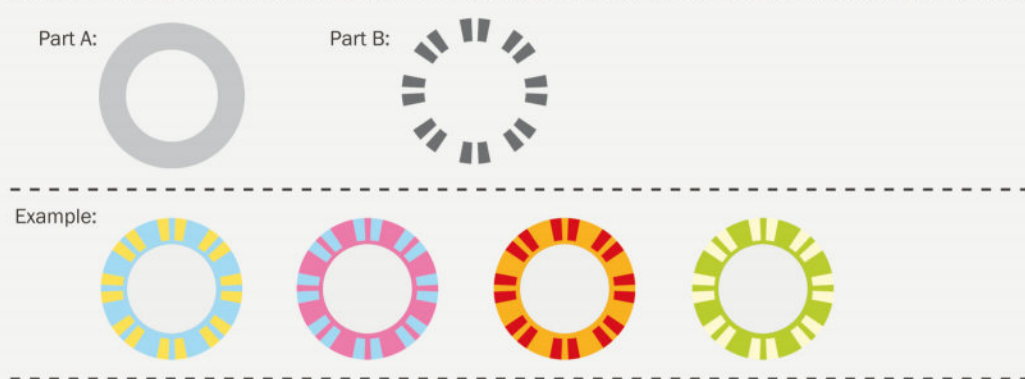
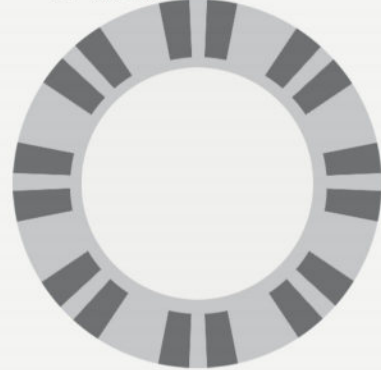
Example:



TP019



TP020



TP021



## SAMPLE DESIGNS REFERENCE

The Ascona



The Dawning



The Everest



# POLYCLAY CHIPS



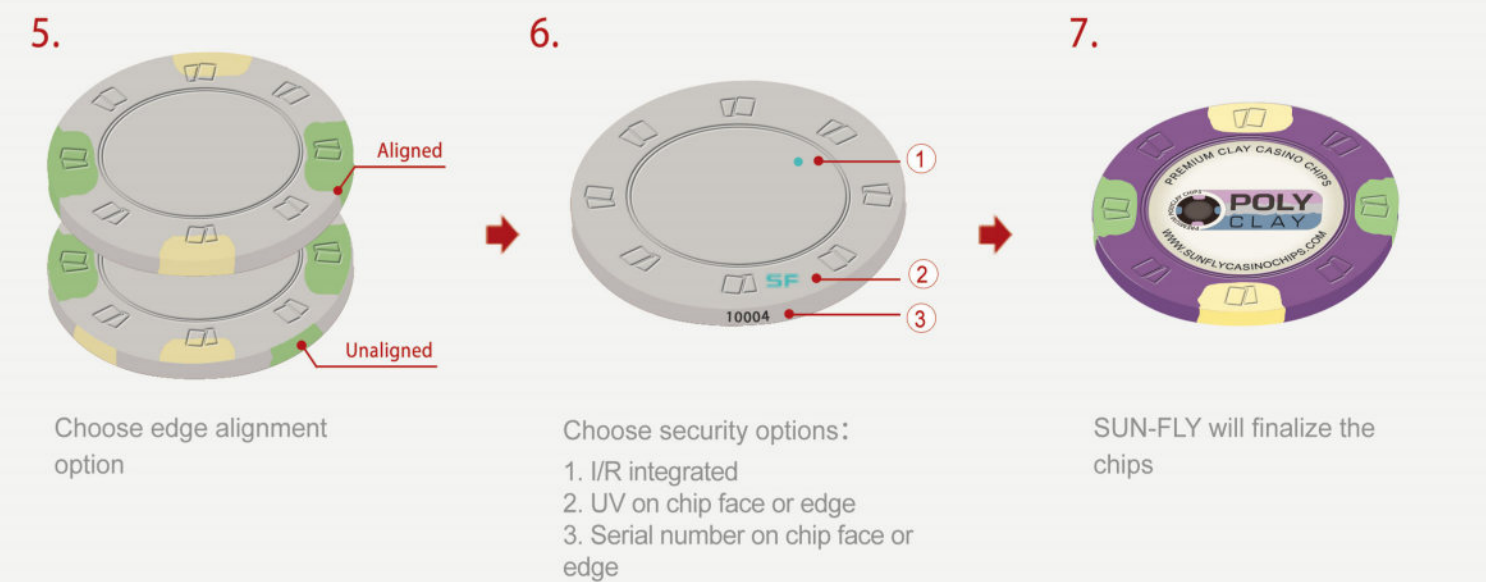
POLYCLAY chips are a new breed of ceramic chips that fuse together the best elements of clay and ceramic chips with intricate impressions pressed into the chip. They are fully customisable in full colour graphics on both faces and the edge using state of the art printing techniques. There are currently 2 different impressions available, diamond and cards that have Sun-Fly's unique high gloss rolling edge. All chip products are made with casino grade materials and are lead free.

**Note:**

Custom shapes, sizes or curved patterns of a chip is acceptable, please speak with us for more detail information.

## CUSTOMIZATION

The POLYCLAY chips are fully customizable on both faces and the edges, the following instruction shows how Sun-Fly helps customers produce a custom PolyClay Chip.



## POLYCLAY CHIP TYPES

Code#: <b>CB001</b> Texture: <b>Cards</b> Diameter: <b>39mm</b> Thickness: <b>3.3mm</b>	Code#: <b>CB002</b> Texture: <b>Diamonds</b> Diameter: <b>39mm</b> Thickness: <b>3.3mm</b>	Code#: <b>CB003</b> Texture: <b>Luck Dragon</b> Diameter: <b>39mm</b> Thickness: <b>3.3mm</b>	Code#: <b>CB004</b> Texture: <b>Pattern</b> Diameter: <b>39mm</b> Thickness: <b>3.3mm</b>

EDGE ALIGNMENT

Alignment is when a pattern, color stripes, stripes or edge spots on the face of the chips extend down to line up with the rolling edge.

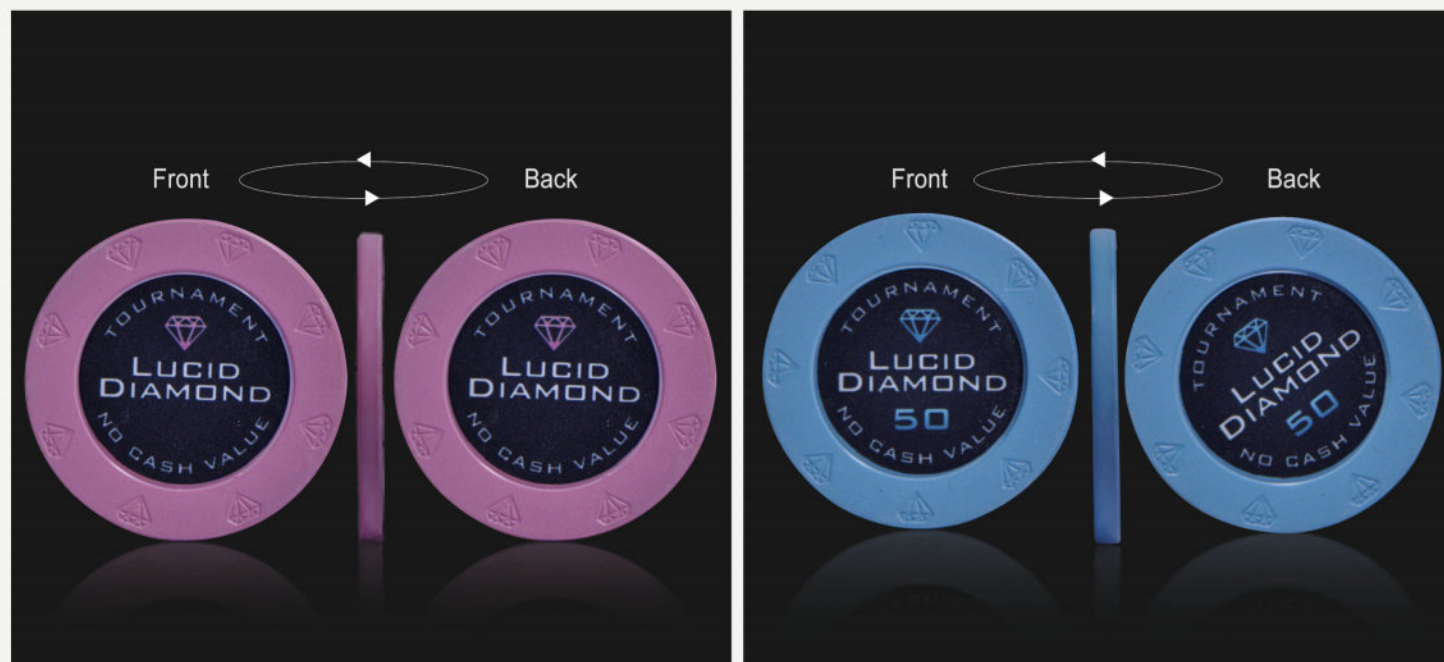


An example of edge alignment

An example of unalignment

FACE ALIGNMENT

Images on both sides of the chip towards to same direction is face alignment.



An example of face alignment

An example of unalignment

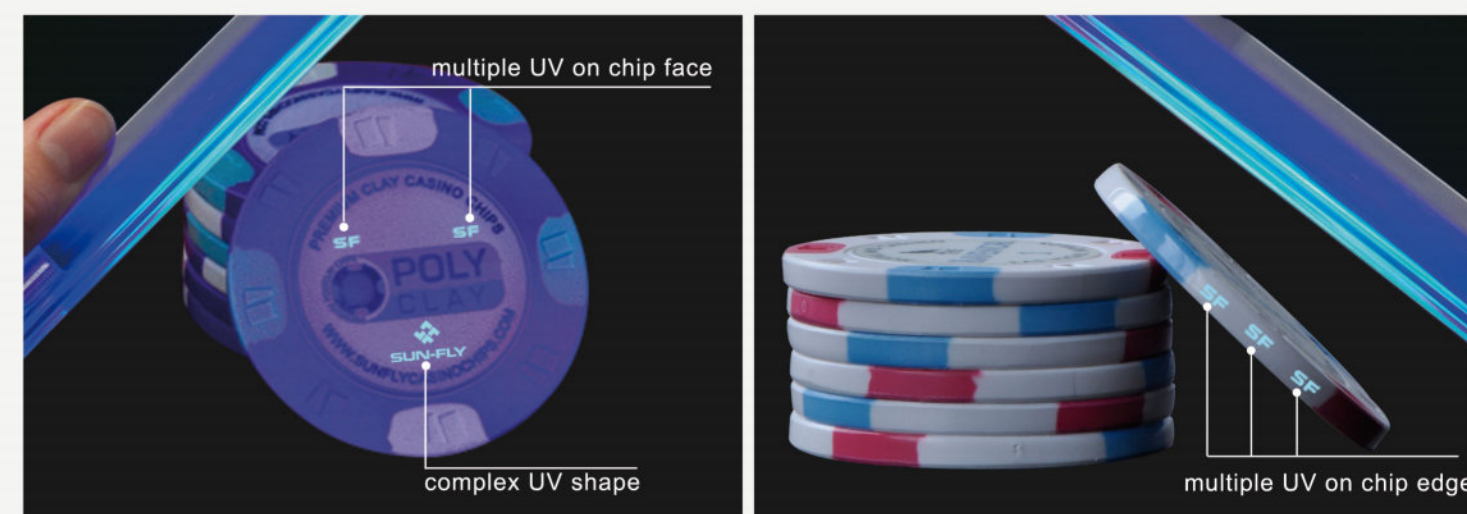
SECURITY OPTIONS

The complexity of making a high quality ceramic chip makes counterfeiting Sun-Fly products extremely difficult, and with the combination of different security features embedded into UV ink, this has made it almost impossible to successfully counterfeit. For professional casinos, this is the most efficient and economic method to identify their own chip.

UV Security

Both faces & the rolling edge of the chips are able to accept UV inks which are invisible to the naked eye. The code or image that is used as the UV print is customizable, so can be unique for each client, which again dramatically reduces the chances of counterfeiting. Additionally, the MOQ of custom making UV security chips is as low as 300 pcs.

Multiple UV marking position on one chip is acceptable without needing any extra charge.



multiple UV on chip face

multiple UV on chip edge

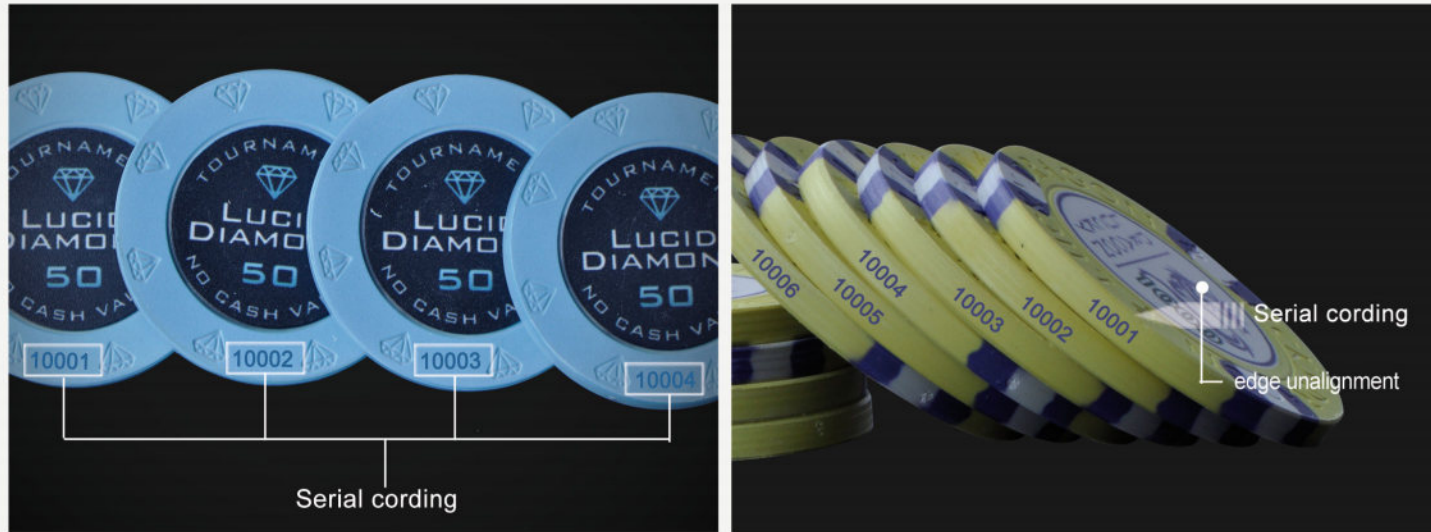
I/R Integration

I/R refers to infra-red, it is a kind of anti-counterfeiting technology that applies I/R sensitive material into the chip material.



## Serial Number

Serial number features a deeper level of anti-counterfeiting protection, is based on the UV and I/R security, to enhance security of all chip products.



Serial number on face

Serial number on edge

## PACKING SPECIFICATION

Model#	PCS/Small Case	PCS/Large Case	Small Case Size	Large Case Size	Small Case Weight	Large Case Weight
CB001	500	1000	22.2*18*10.3	38.5*25*13	5.0	10.0-11.0
CB002	500	1000	22.2*18*10.3	38.5*25*13	5.0	10.0-11.0
CB003	500	1000	22.2*18*10.3	38.5*25*13	4.9	9.9-11.0
CB004	500	1000	22.2*18*10.3	38.5*25*13	5.2	10.0-11.0

## SAMPLE DESIGNS REFERENCE

### The Ravenor Classic



### The Ravenor



### Lucid Diamond



### Lucky Dragon



# POLYSPECTRA



POLYSPECTRA Chips are available in a wide range of colours for roulette games, with the option to choose from one of our standard designs or make it a custom chip. POLYSPECTRA chips are made from the same casino grade materials as our other ceramic chip blanks and can be dye-sublimation printed for all customisation purposes.

## CUSTOMIZATION

The PolySpectra chips are fully customizable on both faces and the edges, the following instruction shows how Sun-Fly helps customers produce a custom PolySpectra Chip.

1.



Diamond Edge Pattern:  
Moedl#:CP001

Card Edge Pattern:  
Moedl#:CP002

Select an edge pattern from our available models. The patterns are caved.

2.



Make a selection on the chip's color, SUN-FLY offers 12 standard colors on POLUSPACETRA chips.

Note: Selected color is originally mixed into the chip body material.

3.

### Option 1: Custom Graphic Design



Provide us with your graphic design files for the centre of the chip.



Using the provided design style with color defined and decal design, Sun-Fly will create and finalise the chip product.

### Option 2: Standard Zodiac Design



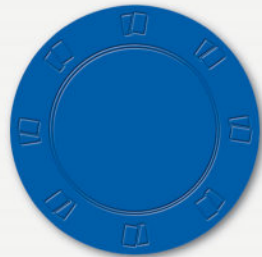
Provide us with your graphic design(option 1),or choose from our standard ZODIAC design(option 2). Black color graphic design is recommended.

4.



SUN-FLY will finalize the chips.

CUSTOMIZATION



Code#: CP001  
Texture: Cards  
Diameter: 39mm  
Thickness: 3.3mm  
Weight: 9.3g



Code#: CP002  
Texture: Diamonds  
Diameter: 39mm  
Thickness: 3.3mm  
Weight: 9.3g

PACKING SPECIFICATION

Model#	PCS/Small Case	PCS/Large Case	Small Case Size	Large Case Size	Small Case Weight	Large Case Weight
CP001	500	1000	22.2*18*10.3	38.5*25*13	5.0	10.0-11.0
CP002	500	1000	22.2*18*10.3	38.5*25*13	5.0	10.0-11.0

SAMPLE DESIGNS REFERENCE

Diamond

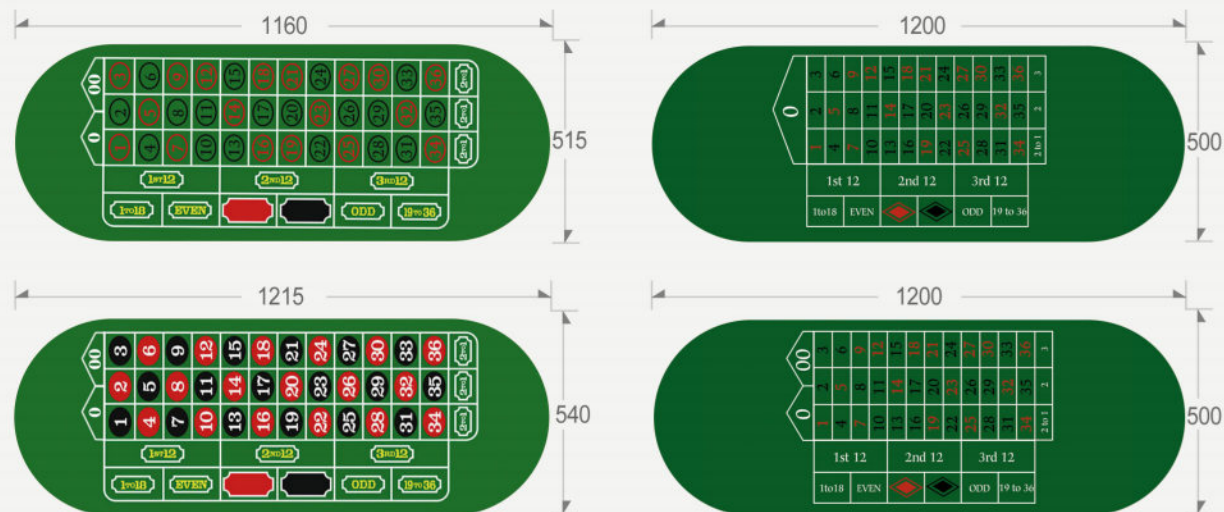


TABLE LAYOUT

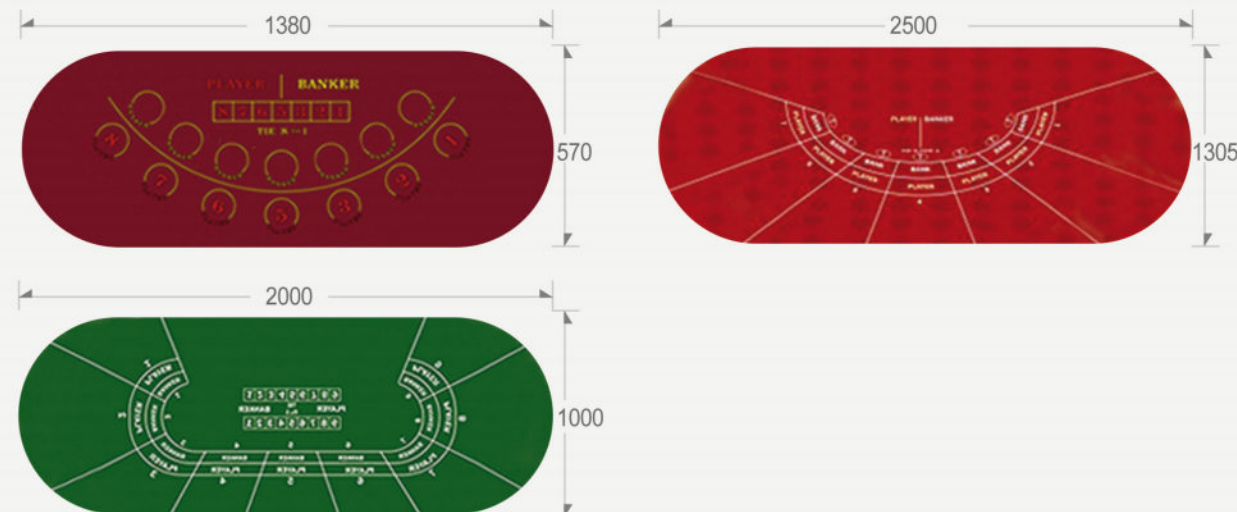


Table layout is a new product line of Sun-fly. On the basis of success of ceramic chips in the past decade, SUN-FLY is able to help our customers producing high end quality layouts with most accurate color and finest texture finishing. Any table layout size is customizable and welcome to supply your requirements for more developments.

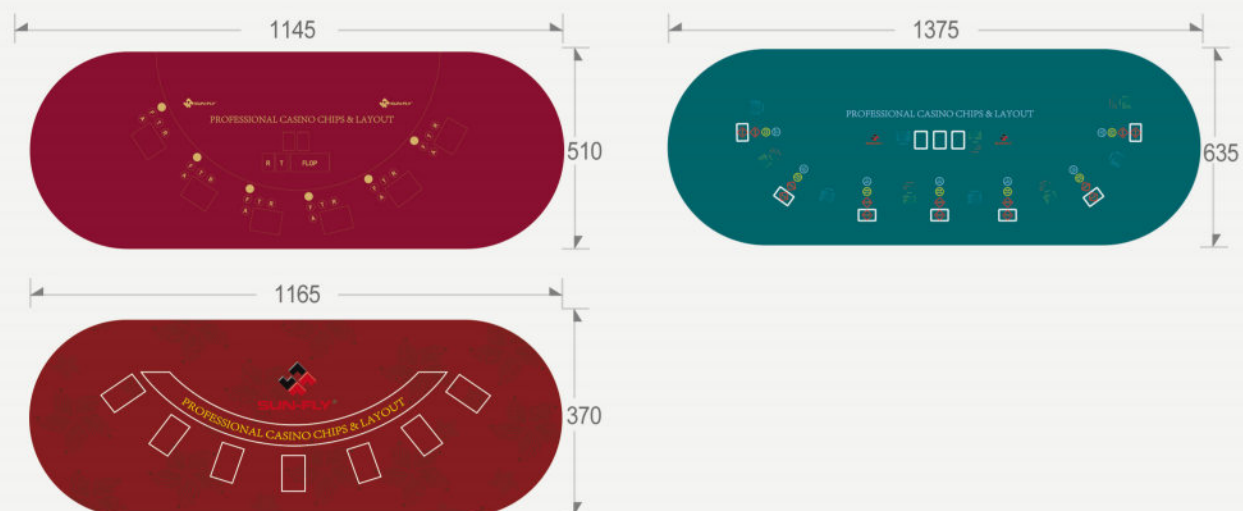
## ROULETTE



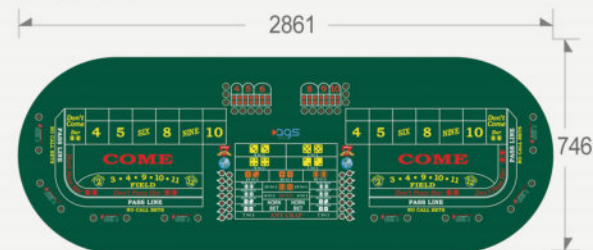
## BACCARAT



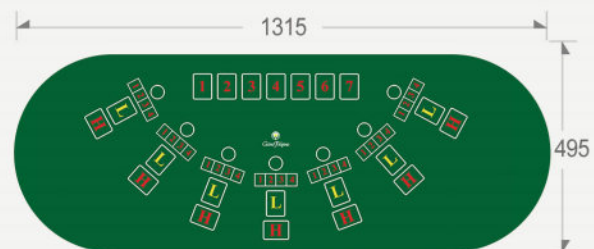
## BLACK JACK



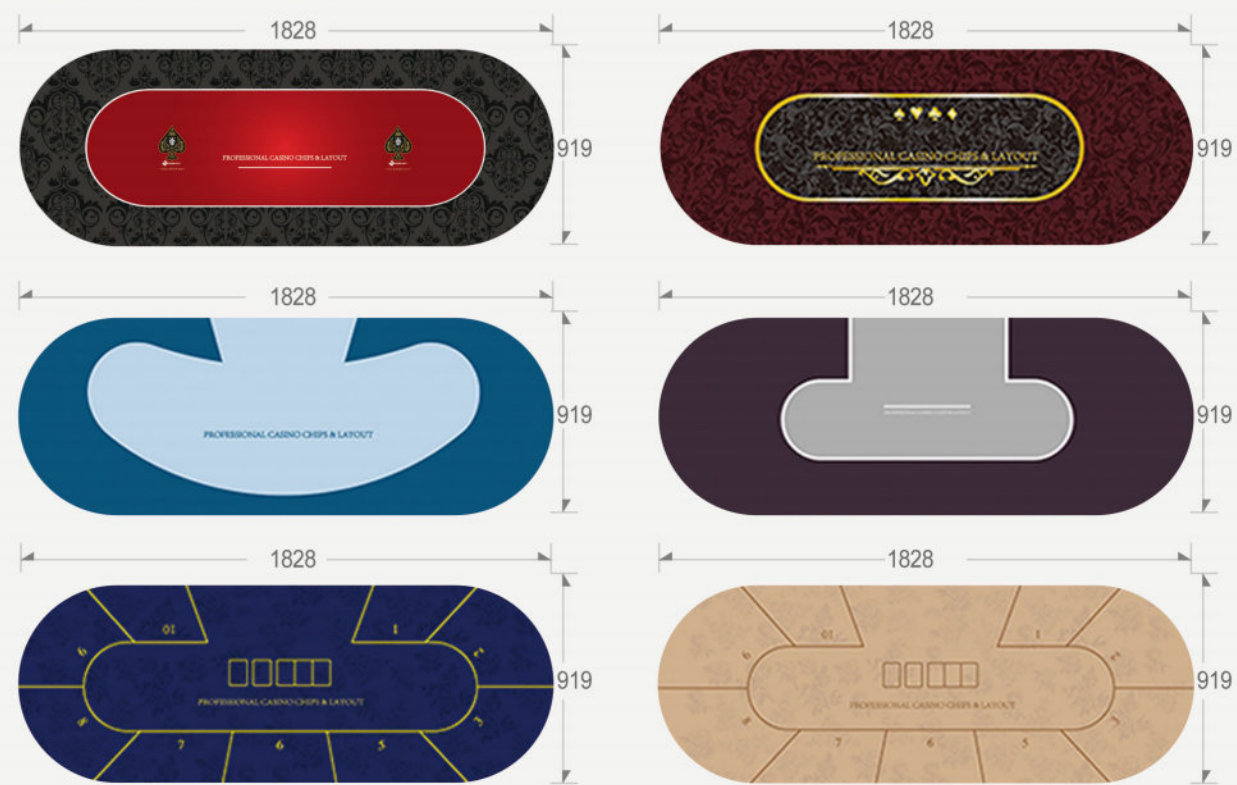
## CRAPS



## POKER



## TEXAS HOLD'EM

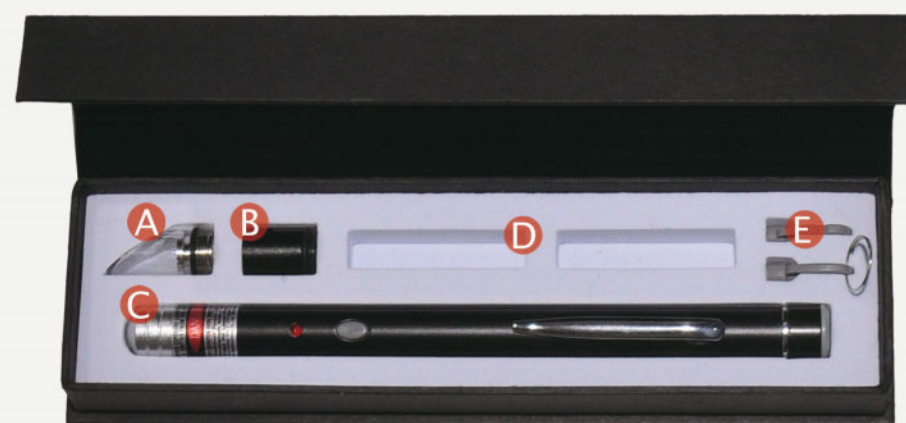


# I/R PEN

The I/R pen is used to detect I/R sensitive materials applied into the chip with showing a green dot.

The pen can also be locked to prevent any persons using or tampering with it who has not been given permission.

## PACKING



- A: Flat Contact Head
- B: Bright Environment Head
- C: I/R Pen with Non-Contact Head
- D: Battery Case
- E: Keys

## SPECIFICATION

Product Name	IR Pen
Model#	SFC-IR01
Maximum Power	<500mw
Wavelength	300-1100nm



# UV LIGHT

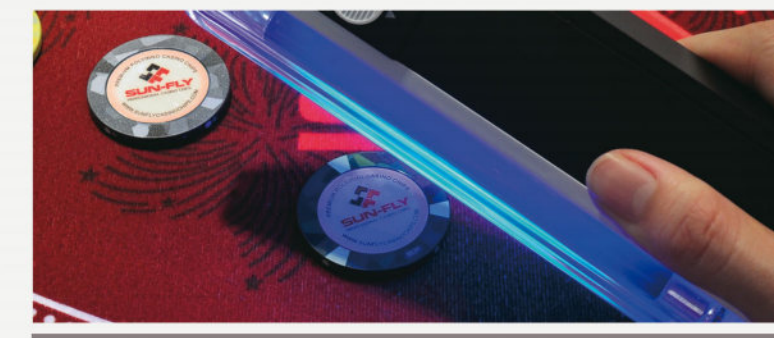
The UV light is able to detect and show pigments in Sun-Fly security inks, in way that is almost identical to that of the security used in actual currency. This very easy to use UV light is placed over the areas where there are UV marks, which makes the UV inks visible when placed directly over the mark.



- A: UV TUBE  
UV light, when placed over Sun-Fly security inks makes them become visible.
- B: Power switch  
A slidable switch controls which light source would be used.
- C: Battery case  
Uses 4 x AA batteries.

## SPECIFICATION

Product Name	UV Light
Model#	SFC-UV01





## UV SECURITY

Both faces & the rolling edge of the chips are able to accept UV inks which are invisible to the naked eye. The code or image that is used as the UV print is customizable, so can be unique for each client, which again dramatically reduces the chances of counterfeiting. Additionally, the MOQ of custom making UV security chips is as low as 300 pcs.

Multiple UV available to different positions.



multiple UV on chip face



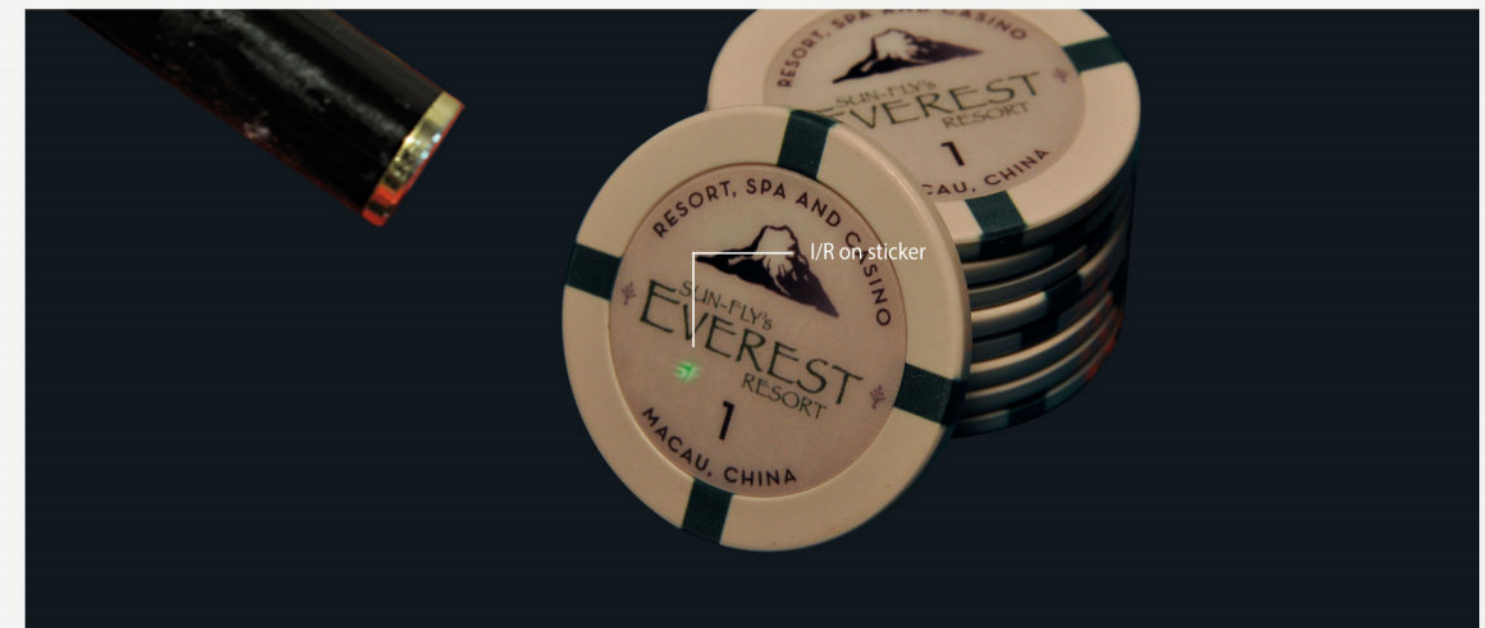
multiple UV on chip edge



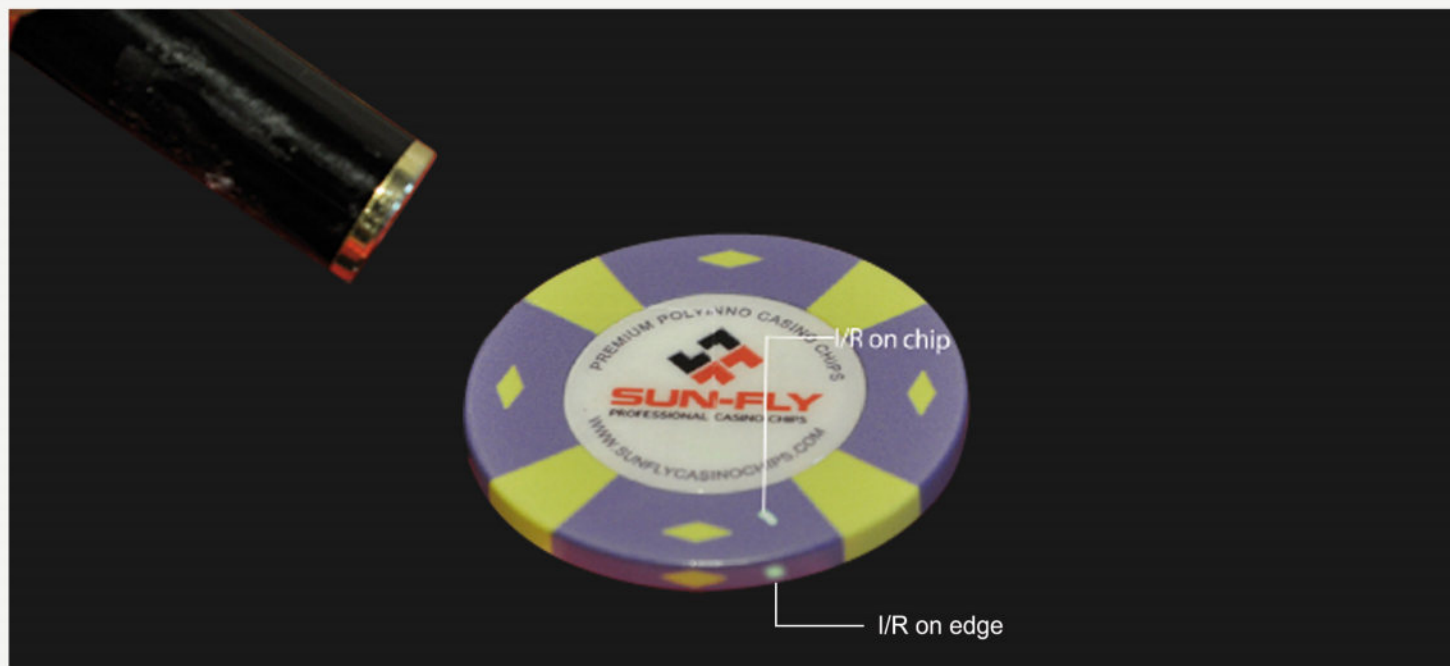
multiple UV on sticker

## IR SECURITY

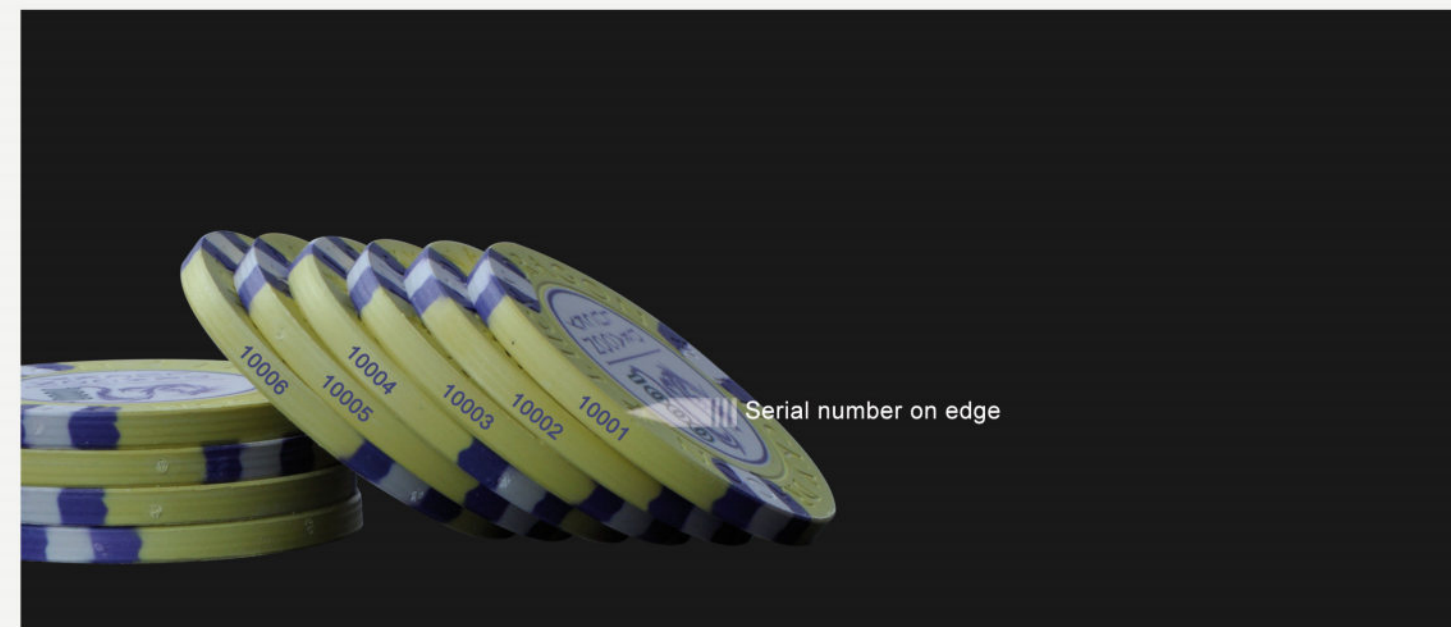
I/R refers to infra-red, it is a kind of anti-counterfeiting technology that applies I/R sensitive material into the chip material.



I/R on sticker



I/R on chip face & edge,full I/R sensitive material around the rolling edge.



Serial number on edge

### SERIAL NUMBER

Serial number features a deeper level of anti-counterfeiting protection, is based on the UV and I/R security, to enhance security of all chip products.



Serial number on face



Serial number on sticker

# ACCESSORIES



Sun-fly not only offers all kinds of gaming industry's accessories products, but also can supply various customisable services. Please do not hesitate to contact us for more details if you have any interests.

## ACCESSORIES PRODUCTS



Silver key ring



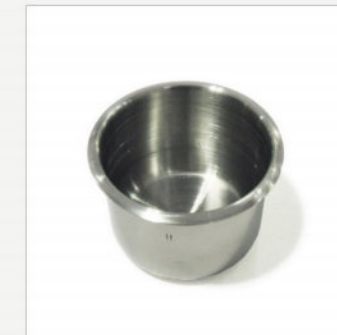
Gold key ring



6deck golden discard holder



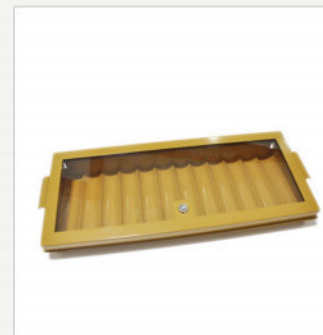
Jumbo s.s cup holder.89mm inner diameter



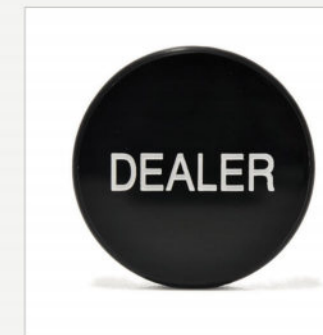
Small s.s cup holder.68mm inner diameter



Homestyle drop box



12row metal chip tray



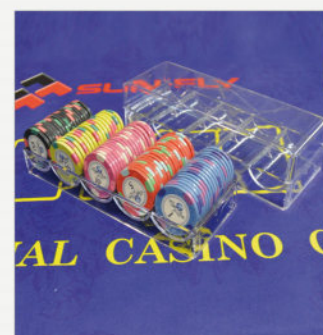
3" dealer puck



200ct clear acrylic chip case with lid



100ct Clear acrylic Chip Tray



100pc clear acrylic chip tray with lid



100ct 45mm chip tray with lid



4 Decks Pro Deaing Shoe



8 Decks Pro Deaing Shoe with lid

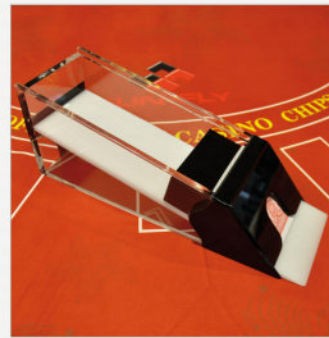
## ACCESSORIES PRODUCTS



6 Decks Pro Deaing Shoe



8 Decks clear Pro Deaing Shoe



8 Decks Pro Deaing Shoe With lid



500ctmahogany chip case



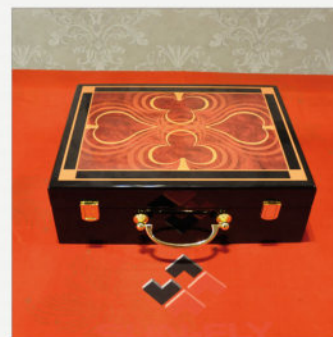
500ct walnut chip case



500ct silver alu chip case



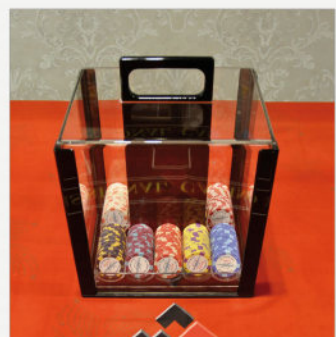
500ct black alu chip case



500ct High gloss suit design chip case



600ct acrylicmaterial chip carrier



1000ct acrylic carrier



600ct acrylic chip carrier



Texas Poker Table

## COLOUR CHART

Sun-Fly offers up to 60 different standard colours. All these colours listed below have been tested and are exactly the same as the printed colours on our chips. Samples of standard colour chips are available, which will reduce the chance of colour aberration when prototyping and makes it easier for customers make their own graphic design.

CC01 White	CC02 Cadet Blue	CC03 Navy Blue	CC04 Sky Blue	CC05 Silver
CC06 Light Blue	CC07 Baby Blue	CC08 Caribbean	CC09 Marine Blue	CC10 Aqua Mint
CC11 Turquoise	CC12 Viridian	CC13 Phthalo Green	CC14 Mint	CC15 Waterlilly
CC16 Forest	CC17 Dark Green	CC18 Mist	CC19 Silver	CC20 Granite
CC21 Dark Grey	CC22 Coral	CC23 Raspberry Red	CC24 Candy Apple	CC25 Burgundy
CC26 Quartz Pink	CC27 Opaque Pink	CC28 Orchid	CC29 Berry	CC30 Neon
CC31 Blush	CC32 Paris Pink	CC33 Fuchsia	CC34 Soft Pink	CC35 Nectar Peach
CC36 Cream	CC37 Butter	CC38 Canary	CC39 Pastel Yellow	CC40 Straw
CC41 Orange Red	CC42 Tangerine	CC43 Leaf Brown	CC44 Yellow	CC45 Lemon
CC46 Leaf Green	CC47 May Green	CC48 Red	CC49 Crimson	CC50 Salmon
CC51 Chestnut	CC52 Rust	CC53 Service Brown	CC54 Almond	CC55 Medium Brown
CC56 Tan	CC57 Ecru	CC58 Prairie Dust	CC59 Espresso	CC60 Black